



Extreme Weather Index

Site-specific thresholds for extremes

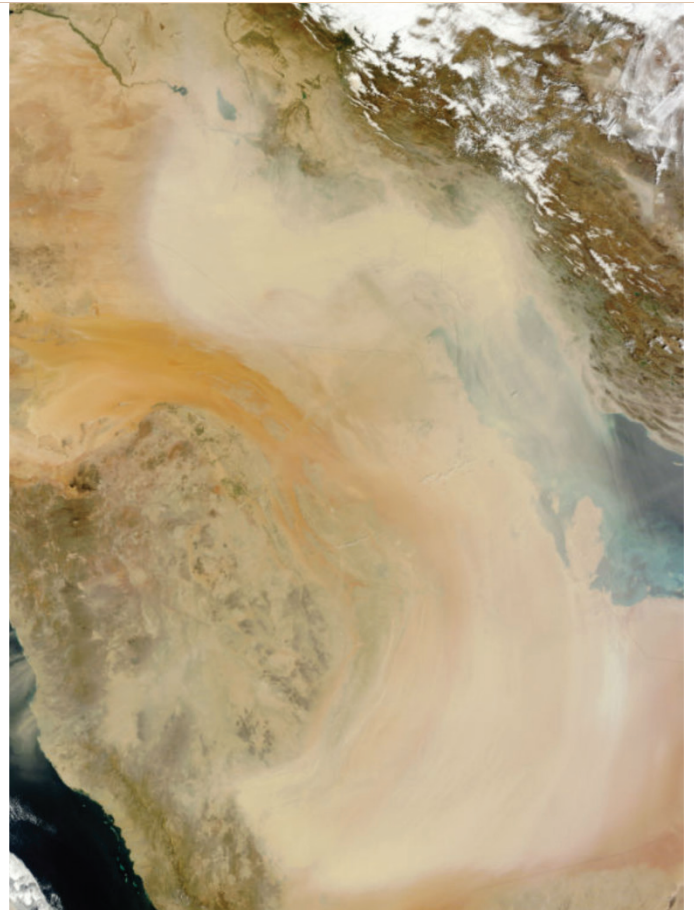
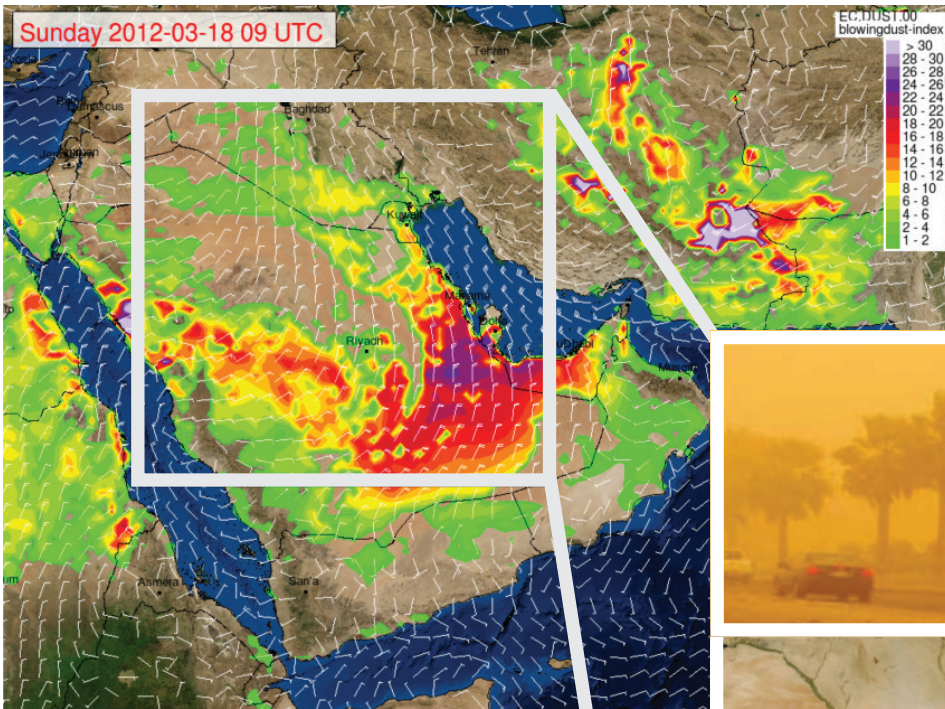
Give your viewers the information they need to prepare for sand and dust storms in your region. The StormGeo dust potential index combines factors such as past weather, surface conditions and standard weather forecasts to predict potential storms.

Sand and dust storms appear on regular basis in regions with dry conditions and scarce vegetation with low ability to bind the soil. Small particles are picked up by the wind and travel long distances, the first thing you see is often a big wall of sand coming your way. The effect is sometimes devastating for people and property, causing crops to die out and cities to be buried under a thick layer of sand.

Key Features

- World wide coverage
- Map forecast
- Point forecast
- Low – Medium – High risk levels





Best data quality

By analyzing vegetation coverage, soil types and other surface conditions we know the potential of a new storm rising up if the weather conditions are right. This information is combined with best quality weather forecasts from the European Centre for Medium Range Weather Forecasts (ECMWF) to predict the risk and severity of sand and dust storms. The risk index is easily translated into a low-medium-high scale which is intuitive to relate to.

All data are available world wide, both as maps and as point data. This gives you an excellent tool to alert your target group early in advance when the potential of the storms are high, medium or low.